



# AIRHEAD

Revolutionary 360° air curtain personal protection helmet.



# AIRCURE

DESIGNING CLEAN AIR **FOR LIFE**

# AIR HEAD

Revolutionary 360° air curtain personal protection helmet.

## Product Information

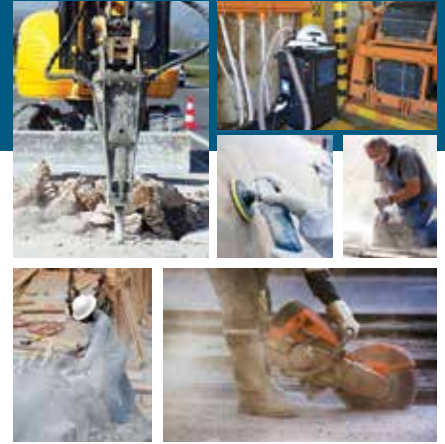
- Independent tests prove the AIRHEAD reduces exposure to respirable dust particles within the breathing zone
- Personal protective barrier to dust and fumes
- Economically viable
- Creates a 360° barrier to airborne contaminants
- Lightweight and comfortable
- Also provides a cooling effect to the wearer
- Attaches to a standard hard hat without compromising its integrity
- Available in 3 options; compressed air, electrical supply, and battery supply
- Optional magnetized brackets for 24V base station provide a fast, easy installation that is non-permanent

## Typical Applications

- Underground winch operators
- Locomotive drivers
- Rock drill operators
- Industry and factory workers
- Grinding, cutting, drilling
- Mobile vehicles, forklift and crane drivers
- Breaker and Crusher operators

## Environomics Features

- ✓ Substantial reduction of exposure to individuals
- ✓ Green filters: Filters created from recycled materials



## AIRHEAD

for permanent electrical supply  
220V, 380V, 525V

Makes use of a fitted base station for fan, filters, and controls. Optional magnetic mounting bracket available.

**Ideal for** Locomotives, Forklifts, Mobile vehicles, and Cranes.

## AIRHEAD

battery operated  
24V

Makes use of a base station for fan, filters, and controls

**Ideal for: Mines:** winch, breaker, and crusher operators.  
**Workshops:** grinders, cutters, packers, sanders, and any other stationary working positions.

## AIRHEAD

for compressed air

The most portable AIRHEAD version, the operator is only connected to a compressed air hose. AIRCURE highly recommends an inline air filter to ensure highest quality of air. Uses minimal amount of compressed air.

**Ideal for: Mines:** rock drillers, stope workers, tip attendants, any other worker with access to compressed air supply.  
**Workshops:** grinders, cutters, sanders, packers.

